

## Arlington Board

David Mathers, Director  
dmathers@stmaryfred.org  
540-373-6491 x 217

Rick Gibala, Diocesan Music  
Coordinator  
rickgibala@comcast.net  
703-524-2815

Susan Trainor, Secretary  
sustrainor@cox.net  
703-860-1236

Bob Malinowski, Treasurer  
bob.malinowski@verizon.net  
703-569-4092

Trudy Maher, Membership  
trudychoirdir@aol.com  
703-435-7544

Bill Atwood, At Large  
watwood@allsaintsva.org  
703.393.2146

Ann Carney, At Large  
anncarney@aol.com  
703-941-3814

CJ Capen, At Large  
cjcaben@saintjn.org  
703-390-2352

Eugene Harper, At Large  
eugene.harper@cox.net  
703-862-7822

Maureen McClure, At Large  
music@saintpatrickparish.org  
540-786-5393

Tom Opfer, At Large  
tomopfer@aol.com  
703-869-9130

## DC Board

Charlene Dorrian, Director  
mcdorrian@yahoo.com  
301-384-5796

Ronald Stolk, Planning  
rstolk@saintpatrickdc.org  
202-347-2713

Jeannette Oliver,  
Secretary/Treasurer  
jlo@umd.edu  
301-405-5565

Tom Stehle, Koinonia  
tvs@tidalwave.net  
301-365 8311

### Asst. Directors/Recruitment:

Henry Bauer, Montgomery Co.  
Hbauermus@aol.com  
301-530-1550

Carol Connolly, Southern MD  
juluka@verizon.net  
301-994-3959

Joan Laskey, Pr. Georges Co.  
joanlaskey@verizon.net  
301-474-3921

Michael White, E-Newsletter  
whitem@sjeparish.org  
301-681-7663

Susan DeCamp, At-Large  
smdecamp@yahoo.com  
301-622-1122

Monique Walton, At Large  
mawsings@aol.com  
301-437-3024

MaryLu Hartsell, At Large  
mlh827@comcast.net  
301-330-7565

Mary Beaudoin, Past Director  
m.beaudoin3@verizon.net  
301-762-2143

# Arlington Washington D.C. Newsletter



VOL. 15 NO. 10

CHAPTER NEWSLETTER

SUMMER 2011

## 34TH ANNUAL NPM CONVENTION - July 28-22 in Louisville, Kentucky

- ... **Registration** - It's too late to register through the chapters, but not too late to get an "advanced" rate. Brochure and full details can be found at [npm.org](http://npm.org).
- ... **Arlington and Washington Chapter Dinner** will be scheduled for 6 p.m., preceded by a 30 minute cash bar at 5:30 p.m. on Thursday, July 21. The convention Eucharist will begin at 8 p.m. The all inclusive cost for dinner will be \$35 or less. We are negotiating with the hotels and nearby local restaurants to get the best deal. We have a large number of convention attendees from the Washington area, so this should be a wonderful dinner with great food and even better company.

*We will send an email to all Arlington and DC NPM chapter members in early June with the final details. Payment must be made in advance by the deadline (to be announced).*

## 36TH ANNUAL NPM CONVENTION— JULY 29 TO AUGUST 2 IN WASHINGTON, DC

- ... **Washington, DC** has been chosen to host the **2013 National Convention** of NPM at Washington's premier convention hotel – The Marriott - Wardman Park !
- ... It is hard to believe that it is now already **10 years** since our last convention when more than three thousand NPM members converged on Washington DC over the Fourth of July holiday in 2001 to celebrate the 25th anniversary of the organization.
- ... That was **one of the most successful conventions** in the history of NPM thanks to the dedication, hospitality and creativity of our local team headed by Arlington Cathedral Musician and Archdiocesan Director of Music, Rick Gibala. Hundreds of area music directors, choir members and friends pitched in to welcome guests from San Diego to Sarasota, from Portland, Maine to Portland, Oregon.
- ... **Washington is a destination city** for Americans and we have so much to offer pastoral musicians including excellent venues, accomplished choirs and ensembles, superb organs and organists, and fine instrumentalists – all with a gracious, almost Southern, hospitality. NPM/ DC board member Ronald Stolk, who chaired the wildly successful AGO national convention here in DC last summer, thinks the prospect of an NPM **National here is win-win**, for both attendees and the three local NPM chapters that will combine forces to make this another memorable Washington conference.
- ... I hope you will share my **excitement** about this wonderful opportunity to join together doing the things we love to do, with people who share our commitment and passion for excellence in pastoral music ministry. Stay tuned for more announcements in the months to come. I hope you will start to think of **creative ways** that you might be able to help make this a reality.

All the best, *Tom Stehle*, Chair of the 2013 NPM National Convention

## DIRECTOR'S CORNER *from DC*

### IT COULD HAPPEN.

You've finished all the books you'd planned to read this summer, your music plan for next year is complete, the jobs around the house you've been postponing are in the "done" column, and you're relaxing in an easy chair with nothing on your mind. It could happen, there's a first time for everything. Here are two things you might want to consider for your leisure-time contemplation this summer.

1. What can we do to encourage sung participation at the weddings in our churches? Even the most jaded among us will have to admit that we watched at least a bit of the Royal Wedding. And if you saw the part of the ceremony which included the hymn singing of the assembled guests, you had to be impressed. Of course, it was hardly a cross-section of British society, and the vast majority had probably gone to similar schools where church attendance was mandatory, but wasn't it nice to see them looking at their worship aids and singing those hymns? The Queen ... Elton John ... assorted sweet young things ... the Bride & Groom!
2. What can we do in our local communities to ensure that there is a Mass setting familiar enough in the local churches to be useful for weddings and funerals? Most recognize that we're in for a few years of experimentation to see what new music best works for the Third Edition of the Roman Missal. Will we and our neighbors use the settings printed in the Missal? Will we reach out to others to find common ground?

Just some things to think about. Happy summer! See you at the Convention?

*Charlene Dorrian*  
Director, DC Chapter

## REFLECTIONS ON THE EVENING & WORKSHOP WITH STEVE JANCO

*From participants ...*

- Steve's ready knowledge and insights on the Roman Missal made for a great discussion. His detailed handout is a just the resource pastoral musicians need for the upcoming and ongoing implementation. In addition, Steve shared his composer's view of what works and what doesn't work musically. Thanks for bringing Steve to us!
  - Steve Janco's presentation was full of very helpful insights for the practical implementation of the new missal texts. But beyond those practical concerns he provided a good background for understanding the process that brought us to this moment. As a composer, he gave us his experience wrestling with these next texts and bringing them to life in our liturgical assemblies. His talk spawned a lot of lively intelligent discussion – well worth the investment of time.
- Steve went right to the heart of the thorny question facing pastoral musicians this year: *"Do we go with revised Masses that are parish favorites or introduce new settings or mix and match?"*
- **Revised Masses: Pros** – some parts remain the same ... we keep continuity in parish repertoires ... it shows there's not a "new" Mass ... may be helpful for funerals & weddings. **Cons** – it may be hard to change to new words ... new words may not fit the tunes as well as the old ... may be hard to choose which to save.
  - **New Masses: Pros** – good, attractive settings may be the best way to introduce new texts ... new melodies have been written for the new words and should treat them better ... it's a chance to retire some "lesser" works. **Cons** – we need to be careful not to load assemblies with too much new music all at once ... value in introducing new parts gradually ... funerals & weddings will be confusing for a while.

## INAUGURAL ORGAN RECITAL

Friday, June 17 at 8 pm

### St. Mary of the Immaculate Conception

1009 Stafford Ave, Fredericksburg, VA 22401

Featuring **Dr. Frederick Teardo**, Associate Organist,  
Saint Thomas Church, 5th Ave, New York City

With this new 3-manual, 49-rank romantic-symphonic organ built in 2010 by Robert William Wallace Pipe Organs of Newport News, tonal director Dr. William Hamner, Jr. has achieved a stunning instrument, scaled and voiced to be equally versatile for repertoire and for the liturgy. With seven 8' chorus reeds, six celestes, and a copious variety of 8' diapason sound, this organ provides a wide range of colors which can be seamlessly blended with one another in an endless array of combinations.

Great and Pedal are partially enclosed, and portions of the Choir (enclosed) and Swell are double-enclosed. Wind pressures are 5" (Choir and unenclosed Great/Pedal), 7" (Swell), 10" (enclosed Great) and 18" (Pontifical Tuba). Fourteen vintage ranks, mid-1950's "Willis" Wicks pipes, were reclaimed from two older organs and voiced to with the new pipework.

Frederick Teardo received the Master of Music and Master of Musical Arts from Yale where he studied with Thomas Murray and Richard Reppann. While at Yale he was University Chapel Organist and later Asst. Organist at Trinity Church on the Green, New Haven. Mr. Teardo received his Bachelor of Music from the Eastman School of Music, where he studied with David Higgs.

Mr. Teardo has won first prize in many competitions and has performed across the United States, most notably at St. Bartholomew's Church, St. Patrick's Cathedral and the Metropolitan Museum of Art in New York City, Washington National Cathedral, Grace Cathedral in San Francisco, Methuen Memorial Music Hall, Trinity Church Copley Square in Boston, and Princeton University Chapel. He has also been a featured performer at Regional and National Conventions of the American Guild of Organists and Organ Historical Society, on the American Public Media's Pipedreams and in a segment on the revived interest of the pipe organ on ABC World News Tonight. In October 2010, Mr. Teardo earned the Doctor of Musical Arts Degree from the Yale School of Music.

A free-will offering will be accepted and a reception will follow the performance. For more information contact David Mathers, Saint Mary Director of Sacred Music, at [dmathers@stmaryfred.org](mailto:dmathers@stmaryfred.org) or 540-373-6491.

## ORGAN DEDICATION RECITAL

Thursday, June 23 at 7 pm

### All Saints Catholic Church

9300 Stonewall Rd, Manassas, VA 20110

Featuring **Dr. Jeremy Filsell**, Artist-in-residence,  
The Cathedral Church of Sts. Peter and Paul,  
"Washington National Cathedral"

The recital will feature solo organ works on the recently rebuilt and enlarged Wicks Organ Op. 6376, a formal blessing of the organ, and a selection of works on the new Yamaha grand piano. Organ works will include pieces by Bach, Bowen, Cocker, Dupré and Rachmaninov; piano works by Bowen and Rachmaninov

Dr. Filsell combines international performing and teaching activities with being Artist-in-Residence at Washington National Cathedral.

Jeremy Filsell has established a concert career as one of only a few virtuoso performers on both the Piano and the Organ. He has performed as a solo pianist in Russia, the USA, across the UK, has appeared regularly at St John's Smith Square, the Wigmore and Conway Halls in London, and was Pianist with the European Contemporary Music Ensemble between 1989 and 1991. Classic CD magazine commented that in his pianism 'he does not attract for his virtuosity but for his ability to make the music unfold with irresistible logic and clarity: music-making of the highest calibre.'

As an organist, Jeremy has recorded for BBC Radio 3 in solo and concerto roles and an extensive solo career has included recent recitals in the UK, USA (where he toured for the 12th time in April 2008 and where he was a featured artist at the 2008 AGO National Convention in Minneapolis), Germany, France, Finland, Norway; and masterclasses in Performance and Interpretation in Ireland, the U.K. and at Yale and Utah State Universities in the USA. A Limpus prize winner and Silver Medallist of the Worshipful Company of Musicians for FRCO as a teenager, Jeremy graduated from Oxford University as Organ Scholar at Keble College. He completed a PhD at Birmingham Conservatoire/Birmingham City University, examining aesthetic and interpretative issues in the music of Marcel Dupré. He lives and works now principally in the USA and combines international performing and teaching activities with being Artist-in-Residence at Washington National Cathedral.

A reception will follow the program. This is a free event. All are welcome. For more information, contact: Bill Atwood at [watwood@allsaintva.org](mailto:watwood@allsaintva.org) or 703-393-2146.

## GET INVOLVED IN YOUR NPM SECTION!

Every member of NPM is encouraged to join the section that corresponds to their interest or core area of ministry. In Louisville , Interest Section Meetings will be held on Tuesday afternoon at 1:30 – 2:45 p.m

This is the best opportunity to meet pastoral musicians with interests similar to yours and to become involved in leadership of our association. Come and enter the conversation. Here are the NPM interest sections and their chairpersons:

### **African American Musicians**

Mr. Meyer Chambers

### **Asian and Pacific Rim Musicians**

Rev. Ricky Manalo, CSP

### **Campus Ministers**

Mr. Stephen Steinbeiser

### **Cantors**

Ms. Mary Lynn Pleczkowski

### **Chant**

Rev. Anthony Ruff, OSB

### **Choir Directors**

Ms. Meg Matuszka

### **Clergy**

Rev. Robert Webster

### **Composers**

Mr. Nicholas Palmer

### **Diocesan Directors of Music**

Mr. Louis Canter

### **Ensemble Musicians**

Ms. Gael Berberick

### **Musicians Serving Religious Communities**

Sr. Nylas Moser, ASC

### **Hispanic Musicians**

Ms. Edna Argüello-Hitchner

### **Music Education**

Ms. Tracy Lake

### **Musicians in the Military**

Col. Tom Luna, USAF

### **Organists**

Dr. Lynn Trapp

### **Pastoral Liturgy**

Mr. Bruce Croteau

### **Pianists**

Dr. Michael V. Smith

### **Youth**

Ms. Rachelle Kramer

## NPM/DC CHAPTER LEADERSHIP

The following have been elected to the NPM/DC Chapter Executive Board for next year:

- **Chapter Director:** Charlene Dorrian
- **Planning:** Henry Bauer
- **Secretary/Treasurer:** Mary Ann Evan
- **Koinonia:** Tom Stehle

### Assistant Directors for Recruitment

- **Montgomery County:** Susan DeCamp
- **Prince George's County:** Joan Laskey
- **District of Columbia:** Ronald Stolk
- **Southern Maryland:** Mary Stevens

*Congratulations!*

## FROM THE MAILBOX ...

A musician in Virginia has sent the following email:

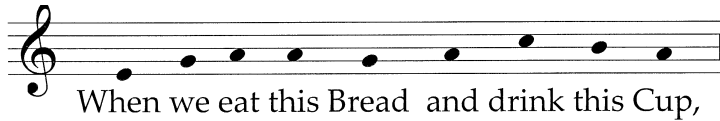
*"Sometimes you ask for ideas to include in future newsletters. I would like to hear what new or revised Mass settings that the local parishes are thinking about choosing.*

*It's nice to have a more universal setting to be able to use for when there are many visitors in the congregation, such as weddings and funerals. Just a thought!"*

Ed. note: Next newsletter deadline is August 15; we'll publish your ideas. Just send them to [mcdorrian@yahoo.com](mailto:mcdorrian@yahoo.com).

Also ... **this and past newsletters** can be found on our website [npmdc.org](http://npmdc.org)

## MUSIC IN THE ROMAN MISSAL ...



... *Audio files now available*

NPM has posted MP3 audio files of most of the order of Mass sung to the chant melodies that will be provided in the new Missal. These recordings are intended to assist clergy, music ministers and members of the assembly in learning these melodies and may be used freely for rehearsing.

Find these files, plus pdf files of the music, and info about the process by which the recordings were produced at [www.npm.org](http://www.npm.org). And for the latest information on the new translation of the Roman Missal, check frequently the U.S. Conference of Catholic Bishop's page on the new translation, <http://www.usccb.org/romanmissal/>

### SERVING THE HOMEBOUND

#### *Music for the Mass for Shut-Ins*

Hats off to the musicians who generously provide music for the Mass for Shut-Ins, celebrated in the Crypt Church of the Basilica of the Shrine of the Immaculate Conception in Washington, DC, and broadcast by WDCW each Sunday at 10:30 a.m.:

- **St. Mary Parish Youth Choir**, Rockville MD
- **St Patrick Church Children's Choir**, Norbeck, MD

### MUSIC DIRECTOR NEEDED

**St. Edward the Confessor Catholic Church**, 16304 Pond Meadow Lane, Bowie, MD 20716. Position available for vibrant, suburban parish of 800 families. Must be a practicing Catholic, with formal musical training, choir direction skills, and solid understanding of Catholic liturgy. Keyboard proficiency required. Music degree preferred. Directs Adult & Youth Choirs; coordinates all other music ministry. Salary commensurate with qualifications and experience. Resume and three references required. Deadline for applications is June 15, 2011.

Send information to the Rectory [jmacri1@verizon.net](mailto:jmacri1@verizon.net) before June 15. Questions: 301- 249-9199 or [kfroehly@aol.com](mailto:kfroehly@aol.com)

# Arlington Washington D.C. Newsletter



NPM/DC — 14727 WEXHALL TERRACE — BURTONSVILLE, MD 20866

<http://www.npmdc.org>

**Mission Statement:** *The National Association of Pastoral Musicians* (NPM) fosters the art of musical liturgy. The members of NPM serve the Catholic Church in the United States as musicians, clergy, liturgists, and other leaders of prayer.